

14 / 10 / 2013

M3 SOFT V3.0 AC8

NEW FEATURES



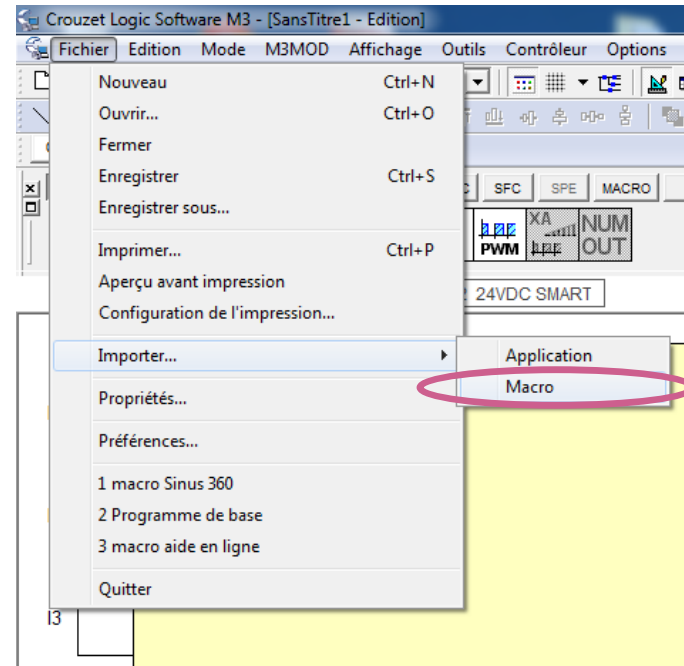
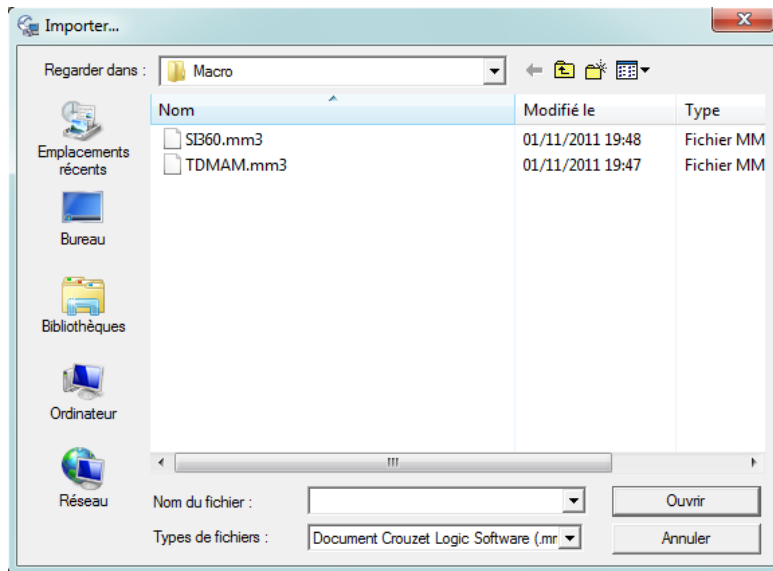
SUMMARY

- Import / Export of macros : Key Benefits
- Import a Macro
- Consult a Macro help file
- Link a help file to a Macro
- Export a Macro
- How to use the Macro tab
- XN06 with Backup inputs function
- TPH & Heat curve Function block release
- Other information

- **Import / Export of macros and corresponding help files**
 - Simplifies the exchange of macros between designers
 - Facilitates the distribution of turnkey subprograms (macros) including documentation
 - Supports the creation of a library with macros that can be up- or downloaded

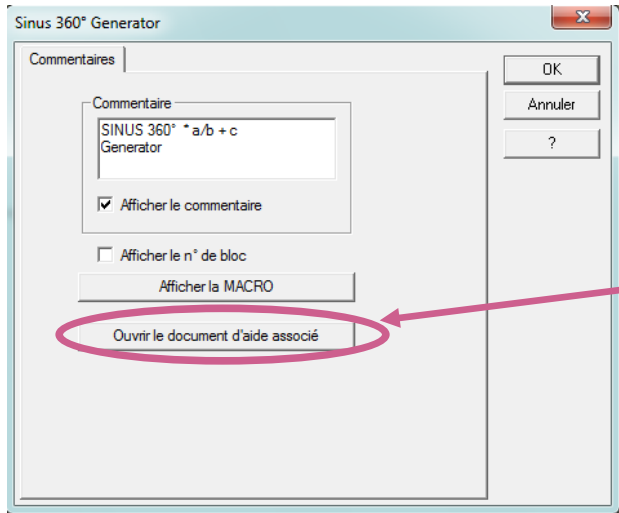
How to import a macro into the *MACRO* tab

- Click *File* in the navigation bar
- Go to *Import*
- Select *Macro*



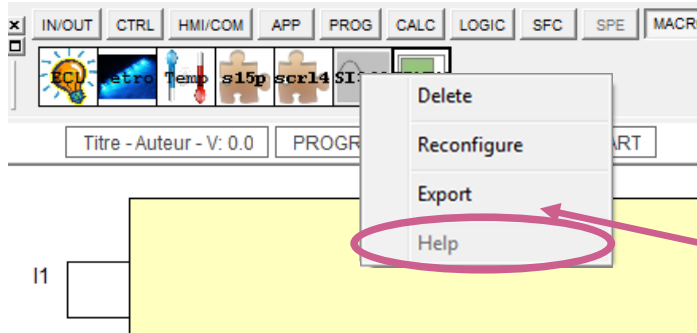
In the window that opens go to the location where the macro that is to be imported is stored, mark it, and then click *Open*.

Consulting a Macro help file



You can consult the Macro online help either:

• by double-click on a macro that has been placed on the main page and then a click on *Open the custom help file*



or

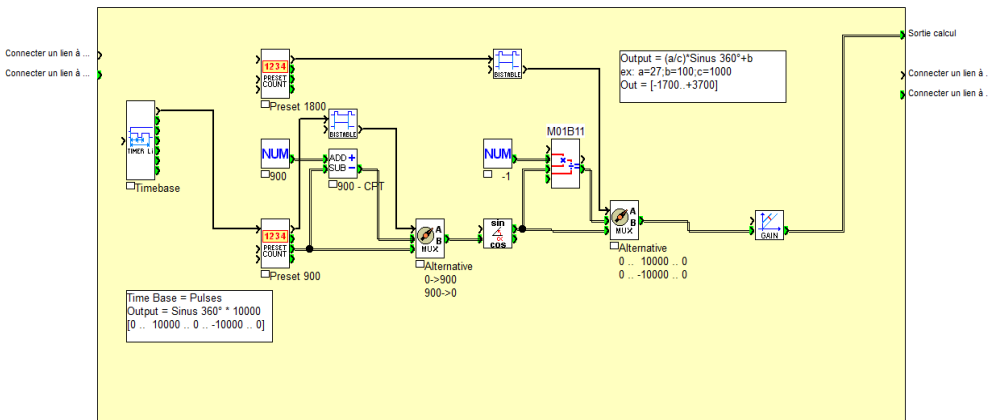
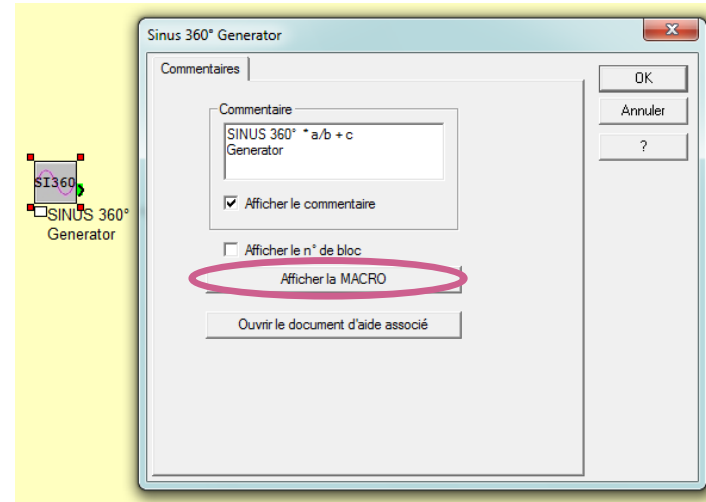
• by right click on a Macro in the *MACRO* tab and selecting *Help*

How to link a custom help file to a Macro

1/2

It is possible to link a custom help file to a macro:

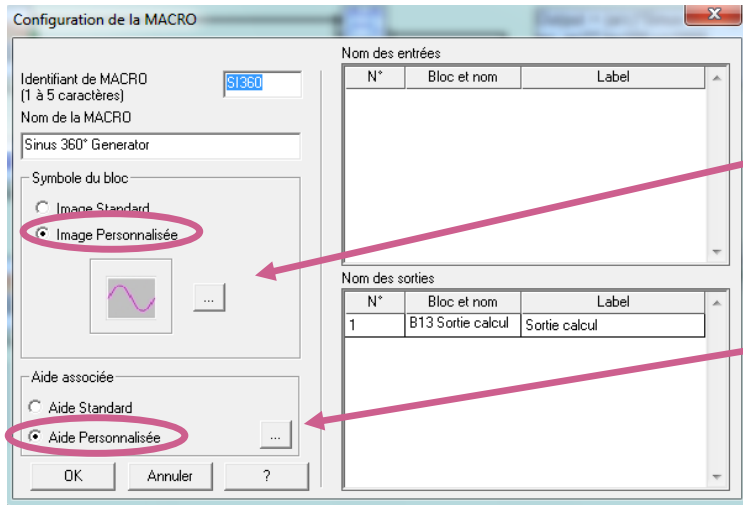
- Place the macro on the main page.
- Double click on the macro
- Click on *Display the MACRO*



- Click on *Modify properties* which opens the *MACRO configuration window*

How to link a custom help file to a Macro

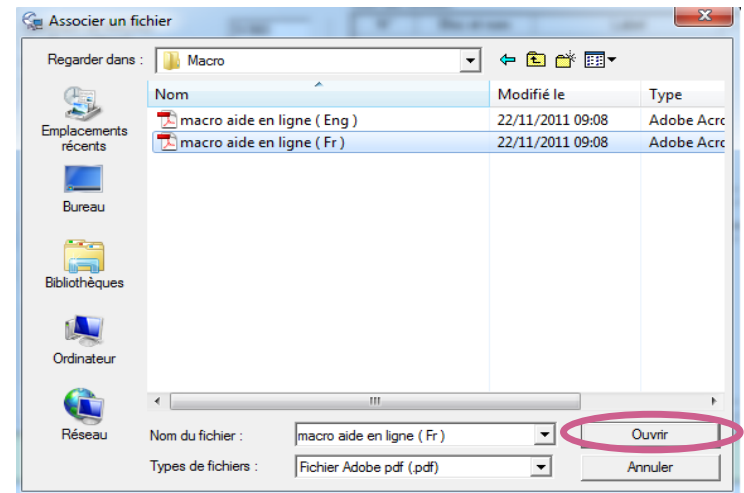
2/2



In this window it is possible to:

- change the image of the macro by ticking *Custom image*. Browse to the image that is to be used by clicking on the button ...
- to link a custom help file to the macro tick *Custom help* and browse to the according .pdf by clicking on the button ...
- Mark the selected pdf and click *Open*

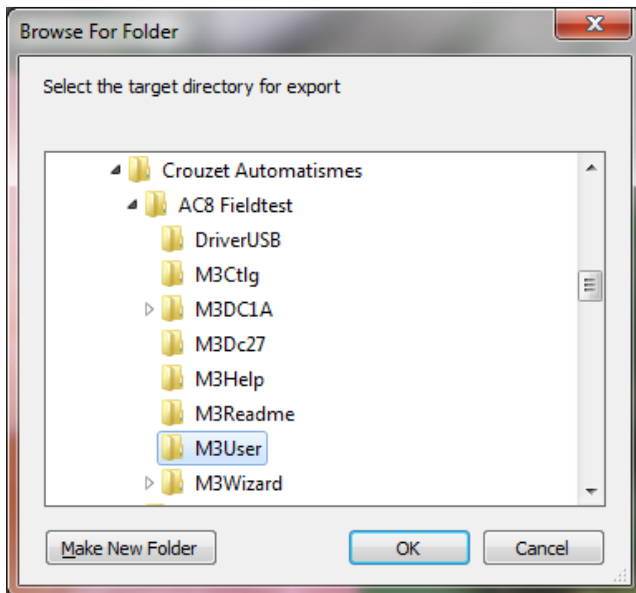
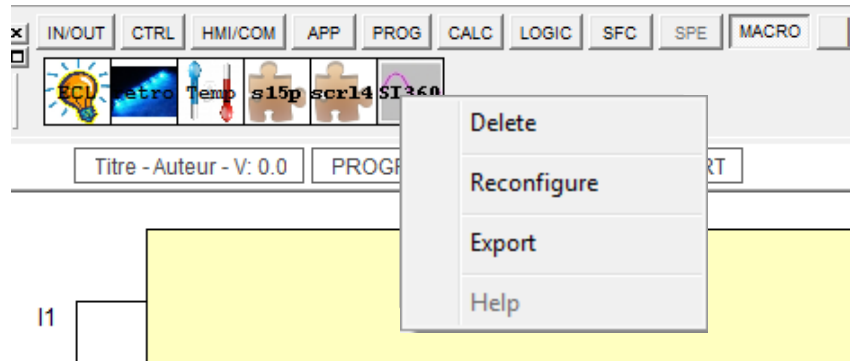
You now have an online custom help linked to the macro.



How to Export a Macro

Export a macro from the *MACRO* tab

- Click right on the macro in the *MACRO* tab
- Select *Export*
- Click *OK*



In the window that opens,

- Select the export destination folder
- Click *OK*

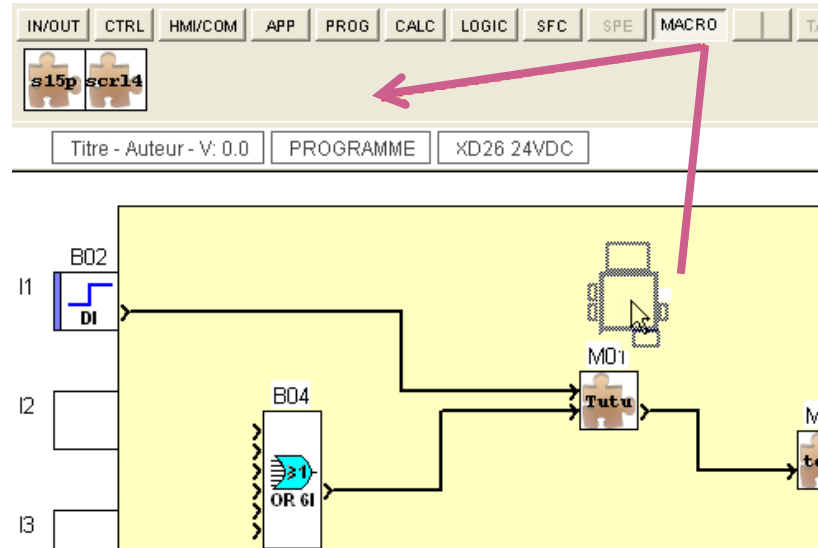
Create your macro library for easy macro re-use

To store a macro in the *MACRO* tab:

- click *right* on the macro in the worksheet that is to be stored and select *Save the MACRO*

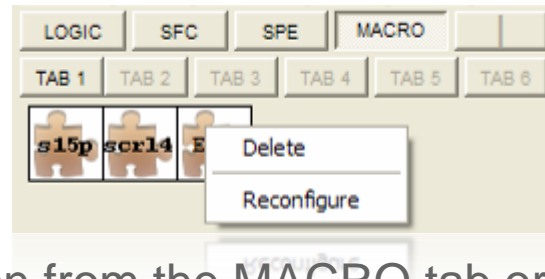
or

- click left and hold on the macro that is to be stored, press the *Shift* key, drag it into the *MACRO* tab and drop it by releasing the mouse click.



Notes:

- Macros are not systematically stored when they are created.
- A macro is defined by its identifier, there can be only one icon by ID
- The text of the identifier is included in the icon. (Reminder: 1 to 5 characters)
- The name of the macro appears when placing the mouse on the icon (pop-up).
- If a FBD that is used inside a macro is no longer present in the workshop, the macro can not be reconstructed at software start and the according icon disappears after a warning message.
- The *MACRO* tab configuration is saved within the workshop context
- One can not store a macro from a sheet whose macros are protected by password, if the password has not been entered when opening the worksheet.



- One can delete an icon from the MACRO tab or a customizable tab by clicking right on it and selecting *Delete*, but this action does not delete the associated FBD's or macros present in the worksheet.
- One can rename an icon by clicking right on it and selecting *Reconfigure*, which brings up the *MACRO configuration* window.

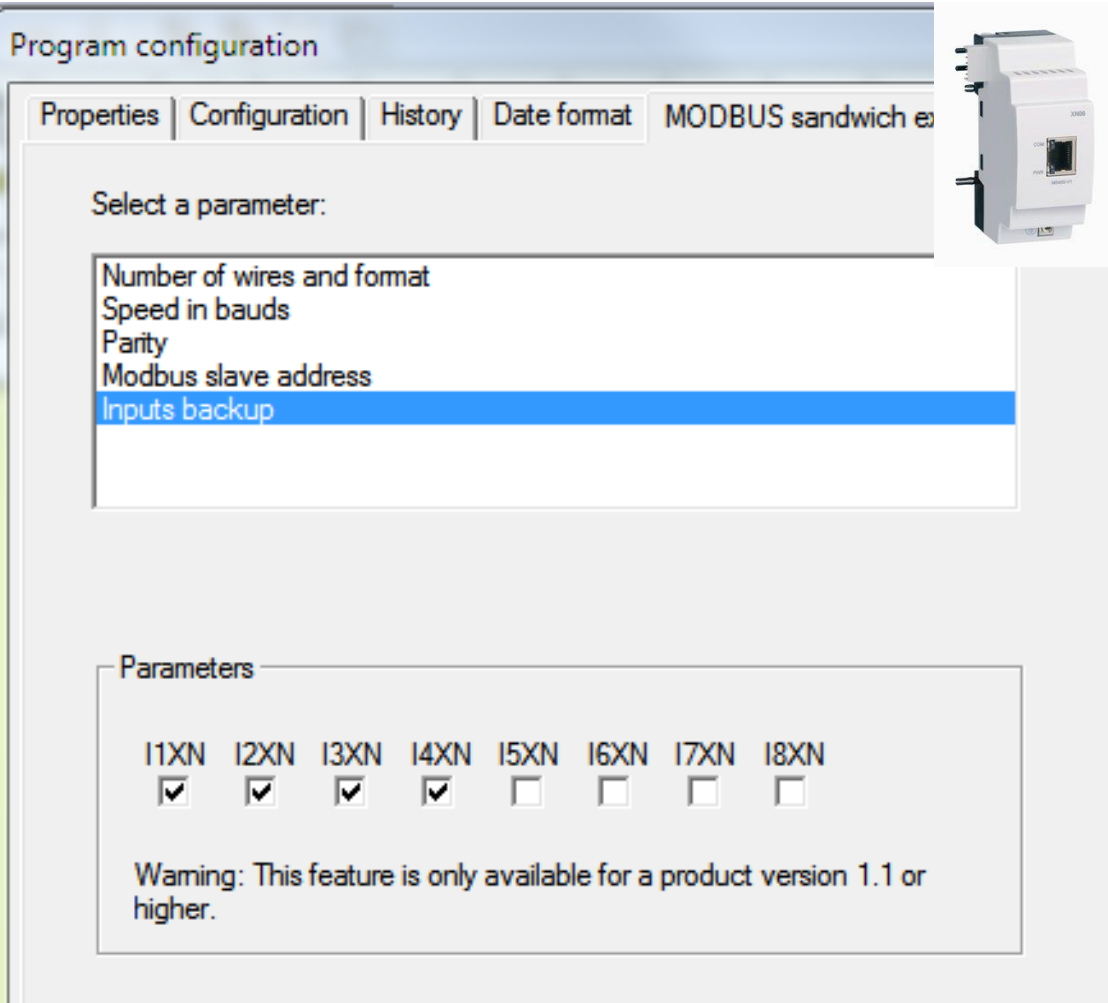
Rules:

- If a macro icon is deleted from the *MACRO* tab, it is also deleted from all the custom tabs it has been copied to.
- If a macro is deleted from the application worksheet, the icon is not deleted and remains in the tab(s).
- Renaming the identifier of the macro in the application worksheet, does not change the identifier of the macro in the *MACRO* tab.
- If a macro is copied within the worksheet and the contents or parameters of the copy are changed, the contents of the original are automatically changed in the same fashion!

Tip:

- To ensure that the contents and parameters of an original macro are not affected by the change in its copy, the original has to be saved in the *MACRO* tab. Additionally, the copy in the worksheet should be renamed.

XN06 with Backup inputs function



Program configuration

Properties | Configuration | History | Date format | MODBUS sandwich e

Select a parameter:

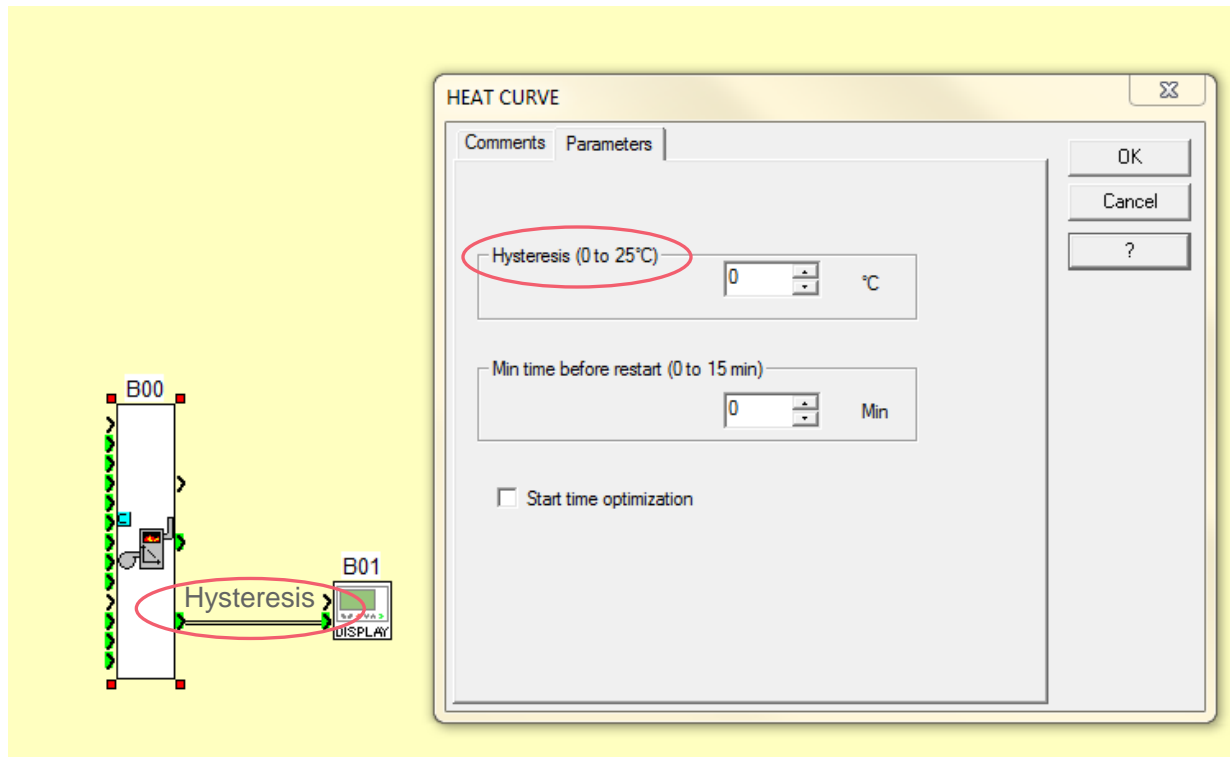
- Number of wires and format
- Speed in bauds
- Parity
- Modbus slave address
- Inputs backup**

Parameters

I1XN	I2XN	I3XN	I4XN	I5XN	I6XN	I7XN	I8XN
<input checked="" type="checkbox"/>	<input checked="" type="checkbox"/>	<input checked="" type="checkbox"/>	<input checked="" type="checkbox"/>	<input type="checkbox"/>	<input type="checkbox"/>	<input type="checkbox"/>	<input type="checkbox"/>

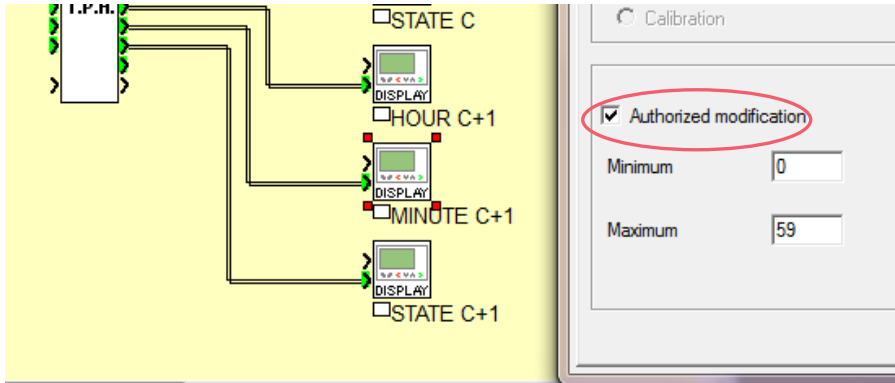
Warning: This feature is only available for a product version 1.1 or higher.

- The new version of Modbus RS485 XN06 extensions ref. 88972250 are manufactured since middle of June 2013
Version : S1.1 H1.2.
- Allow to specify which inputs need to be backed up during power off.
- Useful when a Modbus master device like a MTP HMI sends a value to M3 after a manual input on the HMI.

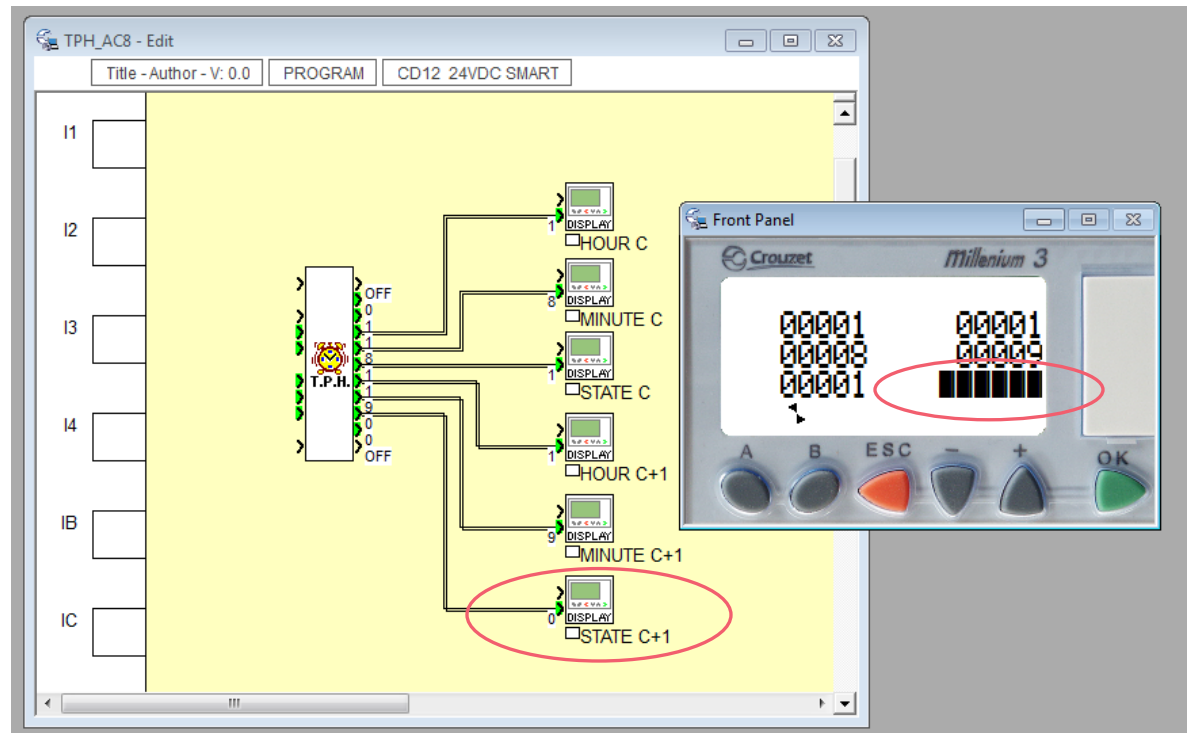


- Hysteresis parameter can be set from 0°C to 25°C (0°C to 10°C in the previous version)
- The Hysteresis value has been added to the output of the FB

TPH Function Block release



- Allow modification of parameters N and N+1 cycle with display FB



- The M3 Soft V3.0 AC8 runs on Windows XP and Seven.
 - The USB PC -> Millenium 3 cable (88970109) do not support USB3 ports.
 - *M3 Soft V3.0 AC8 runs on Windows 8, but the USB driver do not run on some PC. This issue can be solve using the USB/RS232 (88950105) cable and the RS232 Millenium 3 (88970102) cable. This solution runs on USB2 and USB3 ports. This problem will be solve later.*
- M3 Soft has been re-designed with Visual Studio C++ V10
 - It was designed from the origin with Visual Studio C++ V6. This operation has been necessary to guarantee a good maintenance and allow future evolutions. A long period of field tests was done to fix bugs.

**THANK YOU
FOR YOUR ATTENTION**

WWW.CROUZET.COM