

Motor protection relay, phase failure/single-phase sensitive. Three-pole (three-phase), manual or automatic resetting. Direct mounting on BF09 - BF38 contactors, 0.16...0.25A



Product designation

RF38

Product type designation

Motor protection relay

General characteristics

Number of poles	Nr.	3
Overvoltage category		III
Pollution degree		3
Frontal IP degree		IP20
Type of release		Thermal
Protection fuse	aM (IEC)	A 0.5
	RK5 (UL)	A 1
Phase failure detection		Yes
Reset mode		Manual or automatic

Power circuit characteristics

Rated insulation voltage U_i IEC/EN	V	690
Rated impulse withstand voltage U_{imp}	kV	6
Rated operational voltage	V	690
Operational frequency	min	Hz 0
	max	Hz 400
Operational current I_e	Operational current min	A 0.16
	Operational current max	A 0.25
Tripping class		10A
Test Button		Yes
Trip indicator		Yes

Terminals	type	Screw and washer
	screw	M4
	width	mm 12.6
	tool	Phillips 2

Tightening torque for terminals	min	Nm 2
	max	Nm 2.5
	min	Ibin 1.5
	max	Ibin 1.8

Conductor section	AWG/kcmil max	8
-------------------	---------------	---

Auxiliary circuit characteristics

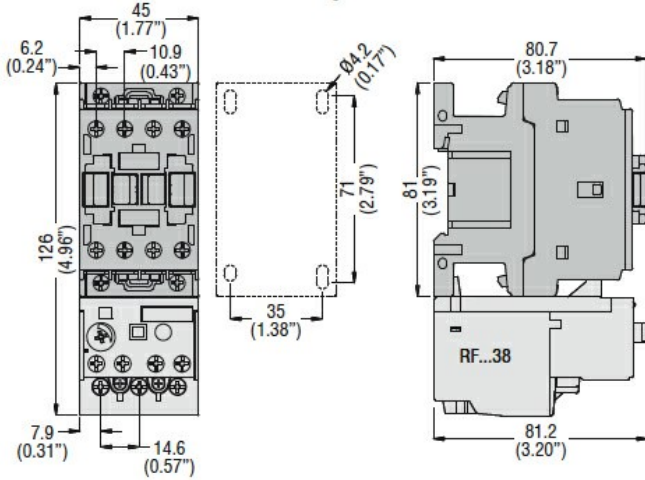
Auxiliary contacts	NO	Nr.	1
	NC	Nr.	1

Motor protection relay, phase failure/single-phase sensitive. Three-pole (three-phase), manual or automatic resetting. Direct mounting on BF09 - BF38 contactors, 0.16...0.25A

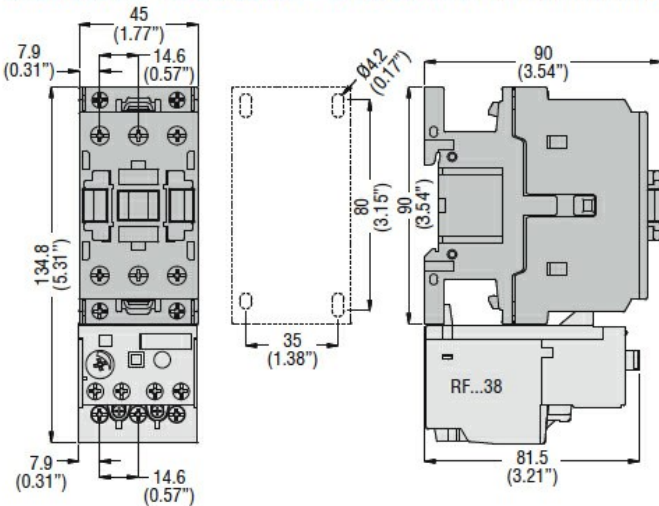
Auxiliary Rated insulation voltage U_i IEC/EN	V	690
Auxiliary Rated impulse withstand voltage U_{imp}	kV	6
Auxiliary Rated operational voltage	V	690
Operating current AC15		
	24V	A 3
	120V	A 3
	240V	A 1.5
	380V	A 0.95
	480V	A 0.75
	500V	A 0.72
	600V	A 0.6
Operating current DC13		
	125V	A 0.11
	600V	A 0.22
IEC Conventional free air thermal current I_{th}	A	10
Terminals		
	Auxiliary circuit type	Screw and washer
	Auxiliary circuit screw	M3,5
	Auxiliary circuit width	mm 8
	Auxiliary circuit tool	Phillips 2
Conductor section		
	Auxiliary circuit Flexible w/o lug max	mm ² 2.5
	Auxiliary circuit Flexible c/w lug max	mm ² 2.5
Tightening torque for terminals		
	Auxiliary circuit min	Nm 0.8
	Auxiliary circuit max	Nm 1
	Auxiliary circuit min	Ibin 0.59
	Auxiliary circuit max	Ibin 0.74
UL/CSA and IEC/EN 60947-5-1 designation		B600-R300
Ambient conditions		
Operating temperature		
	min	°C -25
	max	°C 60
Storage temperature		
	min	°C -50
	max	°C 70
Compensation temperature		
	min	°C -20
	max	°C 60
Max altitude	m	3000
Mechanical features		
Operating position		
	normal allowable	Vertical plan ±30°
Fixing		Direct mounting on BF09... BF38...
Weight	g	160
UL technical data		
Full-load current (FLA) for three-phase AC motor		
	at 480V	A 0.25
	at 600V	A 0.25
Dimensions		

Motor protection relay, phase failure/single-phase sensitive. Three-pole (three-phase), manual or automatic resetting. Direct mounting on BF09 - BF38 contactors, 0.16...0.25A

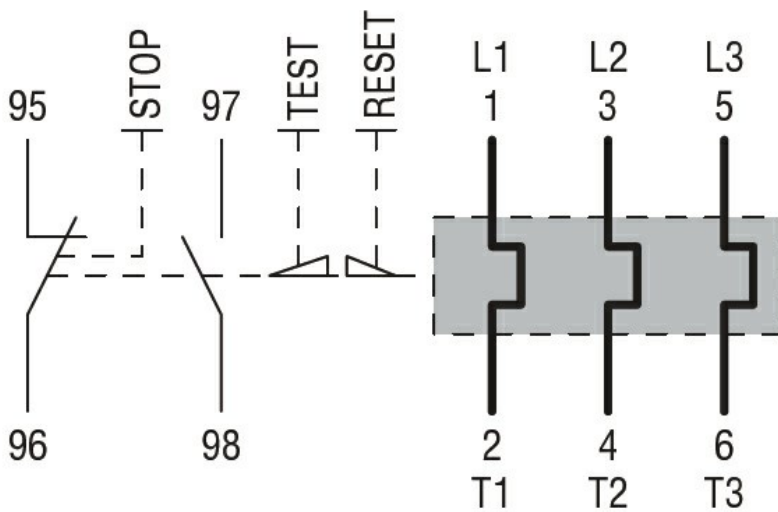
BF00 A... BF09 A... - BF12 A... - BF18 A... - BF25 A... three poles with **RF...38** thermal overload relay



BF26 00A... - BF32 00A... - BF38 00A... three poles with **RF...38** thermal overload relay



Wiring diagrams



Certifications and compliance

Compliance

CSA C22.2 n° 14

IEC/EN 60947-1

IEC/EN 60947-4-1

Motor protection relay, phase failure/single-phase sensitive. Three-pole (three-phase), manual or automatic resetting. Direct mounting on BF09 - BF38 contactors, 0.16...0.25A

UL508

Certifications

CCC

cULus

EAC

ETIM classification

ETIM 8.0

EC000106 -
Thermal overload
relay