

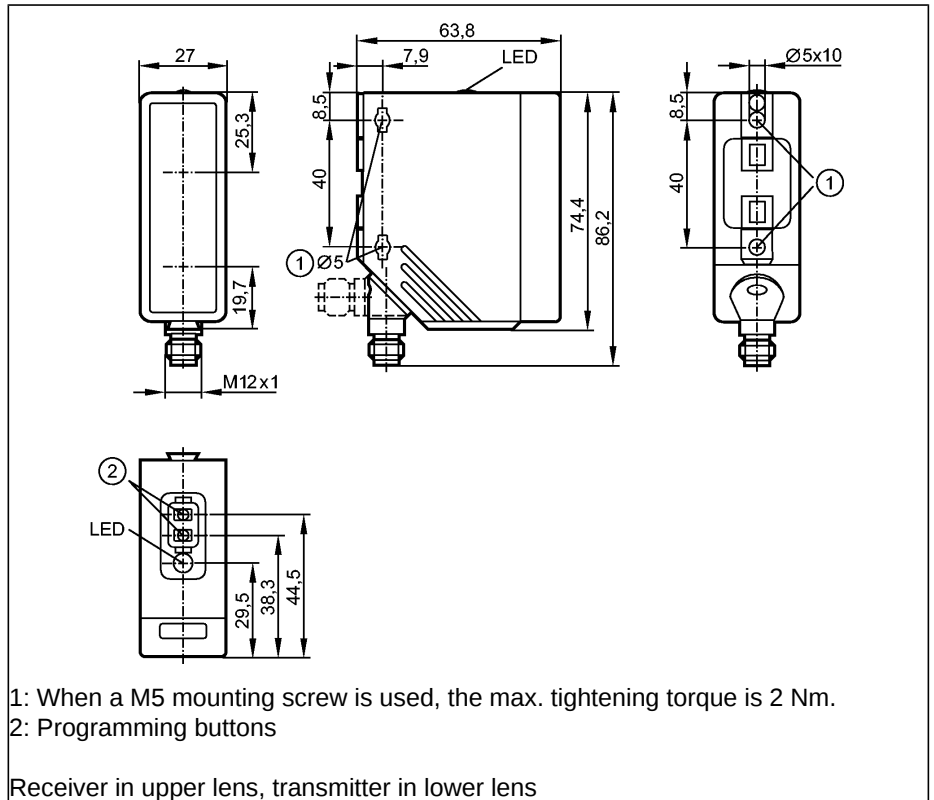
Photoelectric sensors

O4H500

O4H-FPKG/US
Diffuse reflection sensor
Rectangular, plastics
Connector

Background suppression
Teach function
Electronic lock

Range 100...2600mm
(Range referred to white paper 200 x 200 mm, 90 % remission)
adjustable



Made in Germany



Electrical design
Output

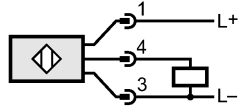
Range	[mm]
Object white (90 % remission)	
Object grey (18 % remission)	
Object black (6 % remission)	
Light spot diameter	[mm]
Operating voltage	[V]
Current rating	[mA]
Short-circuit protection	
Reverse polarity protection	
Overload protection	
Voltage drop	[V]
Current consumption	[mA]
Switching frequency	[Hz]
Type of light	
Ambient temperature	[°C]
Protection	
EMC	
MTTF	[Years]
Housing materials	
Lens material	
Function display	
Switching status	LED
Connection	
Weight	[kg]
Remarks	

DC PNP
light-on / dark-on programmable

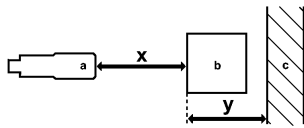
Range	100...2600
Object white (90 % remission)	100...1300
Object grey (18 % remission)	100...900
Object black (6 % remission)	
Light spot diameter	50 (Range 1000 mm)
Operating voltage	10...36 DC ¹⁾
Current rating	200
Short-circuit protection	pulsed
Reverse polarity protection	yes
Overload protection	yes
Voltage drop	< 2.5
Current consumption	25
Switching frequency	1000
Type of light	red light 624 nm
Ambient temperature	-25...60
Protection	IP 67, II
EMC	EN 60947-5-2
MTTF	355
Housing materials	housing: PA; bezel: high-grade stainless steel; operator interface: TPE
Lens material	PMMA
Function display	
Switching status	yellow
Connection	M12 connector
Weight	0.128
Remarks	¹⁾ operating voltage "supply class 2" to cULus.

O4H500

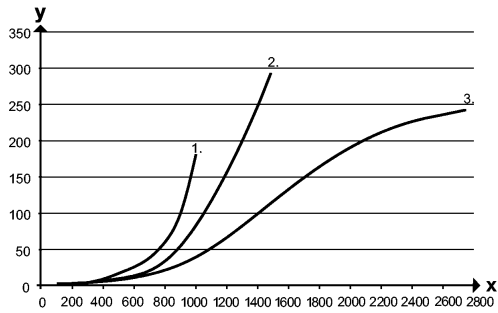
Wiring



Accuracy graph



- a: sensor
- b: object
- c: background
- x: distance sensor / object
- y: min. distance object / background



Values in [mm]

- 1 = object black (6 % remission), background white (90 % remission)
- 2 = object grey (18 % remission), background white (90 % remission)
- 3 = object white (90 % remission), background white (90 % remission)