



AZM 170-02ZRI-B1-2197 24VAC/DC

- 1 Cable entry M 20 x 1.5
- IDC method of termination
- Manual release
- Double-insulated
- Individual coding
- Coding level "High" according to ISO 14119
- 90 mm x 84 mm x 30 mm
- Compact design
- Interlock with protection against incorrect locking.
- Long life
- High holding force
- Particularly suitable for sliding doors

Data

Ordering data

Product type description	AZM 170-02ZRI-B1-2197 24VAC/DC
Article number (order number)	101144275
EAN (European Article Number)	4030661132235
eCl@ss number, Version 9.0	27-27-26-03
eCl@ss number, Version 11.0	27-27-26-03

Approval - Standards

Certificates	BG cULus CCC EAC
--------------	---------------------------

General data

Standards	EN 60947-5-1 BG-GS-ET-19
general information	Individual coding
Coding level according to ISO 14119	High
Active principle	electromechanical
Enclosure material	Plastic, glass-fibre reinforced thermoplastic, self-extinguishing
Material of the actuator	Stainless steel
Material of the contacts, electrical	Silver
Gross weight	295 g

General data - Features

Power to unlock	Yes
Manual release	Yes
Number of actuating directions	2
Number of safety contacts	2

Safety appraisal

Standards	EN ISO 13849-1
Mission Time	20 Year(s)

Safety appraisal - Safety outputs

B10d Normally-closed contact (NC)	2,000,000 Operations
-----------------------------------	----------------------

Mechanical data

Actuating radius, minimum	140 mm
Mechanical life, minimum	1,000,000 Operations
Clamping force in accordance with ISO14119 F_{zh}	1,000 N
Latching force	30 N
positive break travel	11 mm
Positive break force, minimum	17 N
Actuating speed, maximum	2 m/s

Mechanical data - Connection technique

Terminal Connector	IDC method of termination
Cable section, minimum	1 x 0.75 mm ²
Cable section, maximum	1 x 1.0 mm ² , flexible

Mechanical data - Dimensions

Length of sensor	30 mm
Width of sensor	90 mm
Height of sensor	84 mm

Ambient conditions

Degree of protection	IP67 to EN 60529
Ambient temperature, minimum	-25 °C
Ambient temperature, maximum	+60 °C
TEMP_AMBIENT_MIN_GEN	-25

Ambient conditions - Insulation value

Rated insulation voltage U_i	250 V
Rated impulse withstand voltage U_{imp}	4 kV

Electrical data

Thermal test current	6 A
Rated control voltage	24 VAC/DC
Required rated short-circuit current to EN 60947-5-1	1,000 A
Electrical power consumption, maximum	10 W
Switching element	Opener (NC)
Note (Switching element)	Change-over contact with double break, type Zb or 2 NC or 3 NC or 4 NC contacts, with galvanically separated contact bridges
Switching principle	Creep circuit element

Switching frequency	1,000 /h
---------------------	----------

Electrical data - Safety contacts

Voltage, Utilisation category AC15	230 VAC
Current, Utilisation category AC-15	4 A
Voltage, Utilisation category DC13	24 VDC
Current, Utilisation category DC13	4 A

Other data

Note (applications)	sliding safety guard removable guard hinged safety guard
---------------------	--

Scope of delivery

Included in delivery	Actuators must be ordered separately. Slot sealing plugs
Delivery scope of Mounting material	Tamperproof screws

Notes

Note (General)	This type termination (IDC) method enables simple connection of flexible conductors without the need for the use of conductor ferrules
Note (Manual release)	right For manual release using M5 triangular key, available as accessory Additional manual release on side

Ordering code

Product type description:

AZM 170(1)-(2)Z(3)I(4)-(5)-(6)-(7) (8)

(1)

without	IDC method of termination
SK	Screw connection

(2)

11	1 NO contacts/1 NC contact
02	2 NC contact

(3)

without	Latching force 5 N
R	Latching force 30 N
I	Individual coding

(4)

without	Power to unlock
A	Power to lock

(5)

without	cable gland
ST	M12 x 1 connector

(6)

B1	with actuator B1
B5	with actuator B5
B6L	with actuator B6L
B6R	with actuator B6R

(7)

without	Manual release
2197	Manual release from side (Power to unlock)
1637	Gold-plated contacts

(8)

24VAC/DC	Us 24 VAC/DC
110VAC	Us 110 VAC

Pictures

Product picture (catalogue individual photo)

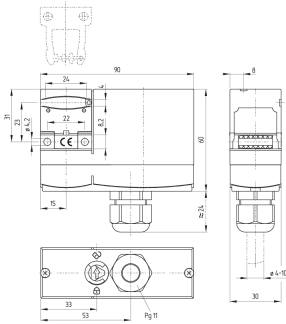


ID: kazm1fi3

| 595.8 kB | .jpg | 262.114 x 331.258 mm - 743 x 939 px - 72 dpi

| 49.6 kB | .png | 74.083 x 93.486 mm - 210 x 265 px - 72 dpi

Dimensional drawing basic component



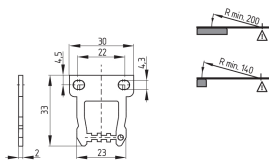
ID: kazm1gi3

| 106.0 kB | .cdr |

| 6.2 kB | .png | 74.083 x 83.961 mm - 210 x 238 px - 72 dpi

| 195.9 kB | .jpg | 352.778 x 400.403 mm - 1000 x 1135 px - 72 dpi

Dimensional drawing actuator



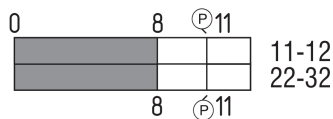
ID: 1az17b03

| 28.1 kB | .cdr |

| 3.5 kB | .png | 74.083 x 51.506 mm - 210 x 146 px - 72 dpi

| 68.7 kB | .jpg | 352.778 x 245.181 mm - 1000 x 695 px - 72 dpi

Switch travel diagram



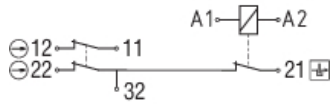
ID: kazm1s01

| 19.5 kB | .cdr |

| 1.8 kB | .png | 74.083 x 26.458 mm - 210 x 75 px - 72 dpi

| 49.4 kB | .jpg | 352.778 x 125.236 mm - 1000 x 355 px - 72 dpi

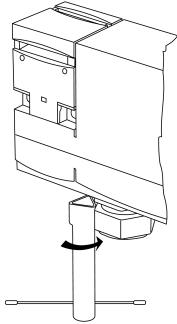
Diagram



ID: kazm1k11

| 55.1 kB | .ai | 297 x 210.002 mm - 841 x 595 px - 72 dpi
 | 1.8 kB | .png | 74.083 x 23.989 mm - 210 x 68 px - 72 dpi
 | 7.1 kB | .jpg | 74.083 x 23.989 mm - 210 x 68 px - 72 dpi

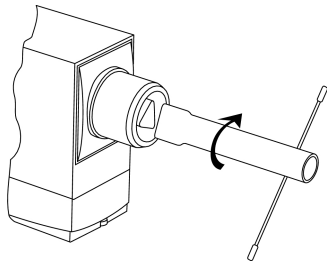
Operating principle



ID: kazm1a70

| 213.5 kB | .jpg | 352.778 x 656.519 mm - 1000 x 1861 px - 72 dpi
 | 6.5 kB | .png | 74.083 x 137.583 mm - 210 x 390 px - 72 dpi

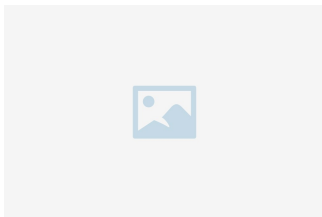
Operating principle



ID: kazm1a71

| 113.1 kB | .jpg | 352.778 x 280.811 mm - 1000 x 796 px - 72 dpi
 | 4.6 kB | .png | 74.083 x 58.914 mm - 210 x 167 px - 72 dpi

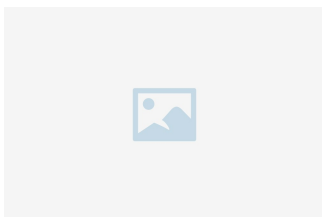
Assembly example



ID: kazm1m06

| 98.4 kB | .cdr |

Actuating radius



ID: kaz17r05

| 19.8 kB | .cdr |

Actuating radius



ID: kaz17r06
| 19.8 kB | .cdr |

Schmersal Ltd., Sparrowhawk Close, WR14 1GL Malvern

The details and data referred to have been carefully checked. Images may diverge from original. Further technical data can be found in the manual. Technical amendments and errors possible.

Generated on: 28/10/2021, 16:21