



GLV30-8-2500/47/73c

Reflection light scanner

GLV30-8-2500/47/73c

Plastic connector M12 x 1, 4-pin

CE

- ◆ M30 housing
- ◆ Light/dark switching



Release date: 2005-04-28 09:48 Date of issue: 2005-07-04 419128_ENG.xml

General specifications

Detection range	100 ... 2500 mm
Light source	IRED
Approvals	CE
Adjustment range	500 ... 2500 mm
Light type	infrared, modulated light
Diameter of the light spot	approx. 450 mm at a distance of 2000 mm
Angle of divergence	± 7 °
Ambient light limit	30000 Lux

Indicators/operating means

Function display	LED yellow, lights up if receiver is not lit
Operating elements	sensing range adjuster

Electrical specifications

Operating voltage	24 V DC ± 20 %
Ripple	10 %
No-load supply current I ₀	30 mA

Output

Switching type	light/dark switching
Signal output	2 pnp, antivalent, short-circuit proof, protected against reverse polarity
Switching voltage	max. 30 V DC
Switching current	max. 200 mA
Switching frequency f	35 Hz
Response time	10 ms

Standard conformity

Standards	EN 60947-5-2
-----------	--------------

Ambient conditions

Ambient temperature	-20 ... 60 °C (253 ... 333 K)
Storage temperature	-20 ... 75 °C (253 ... 348 K)

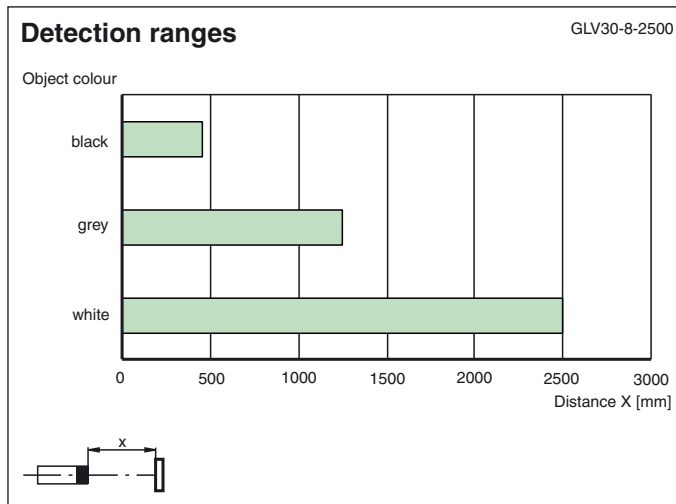
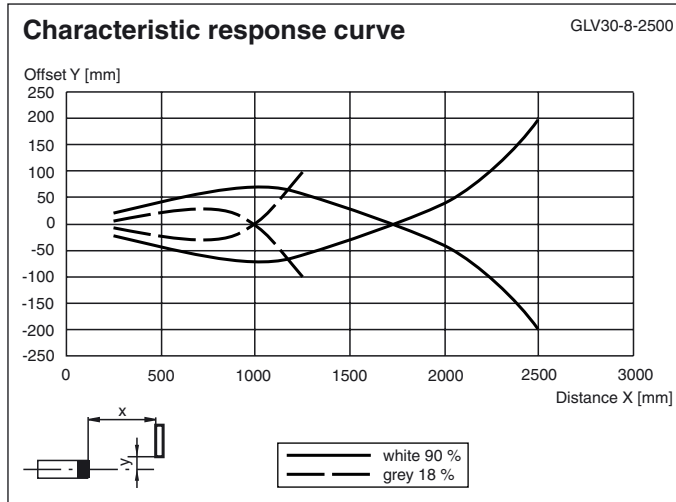
Mechanical specifications

Protection degree	IP67
Connection	Plastic connector M12 x 1, 4-pin
Material	
Housing	ABS
Optical face	Plastic lenses
Mass	approx. 70 g

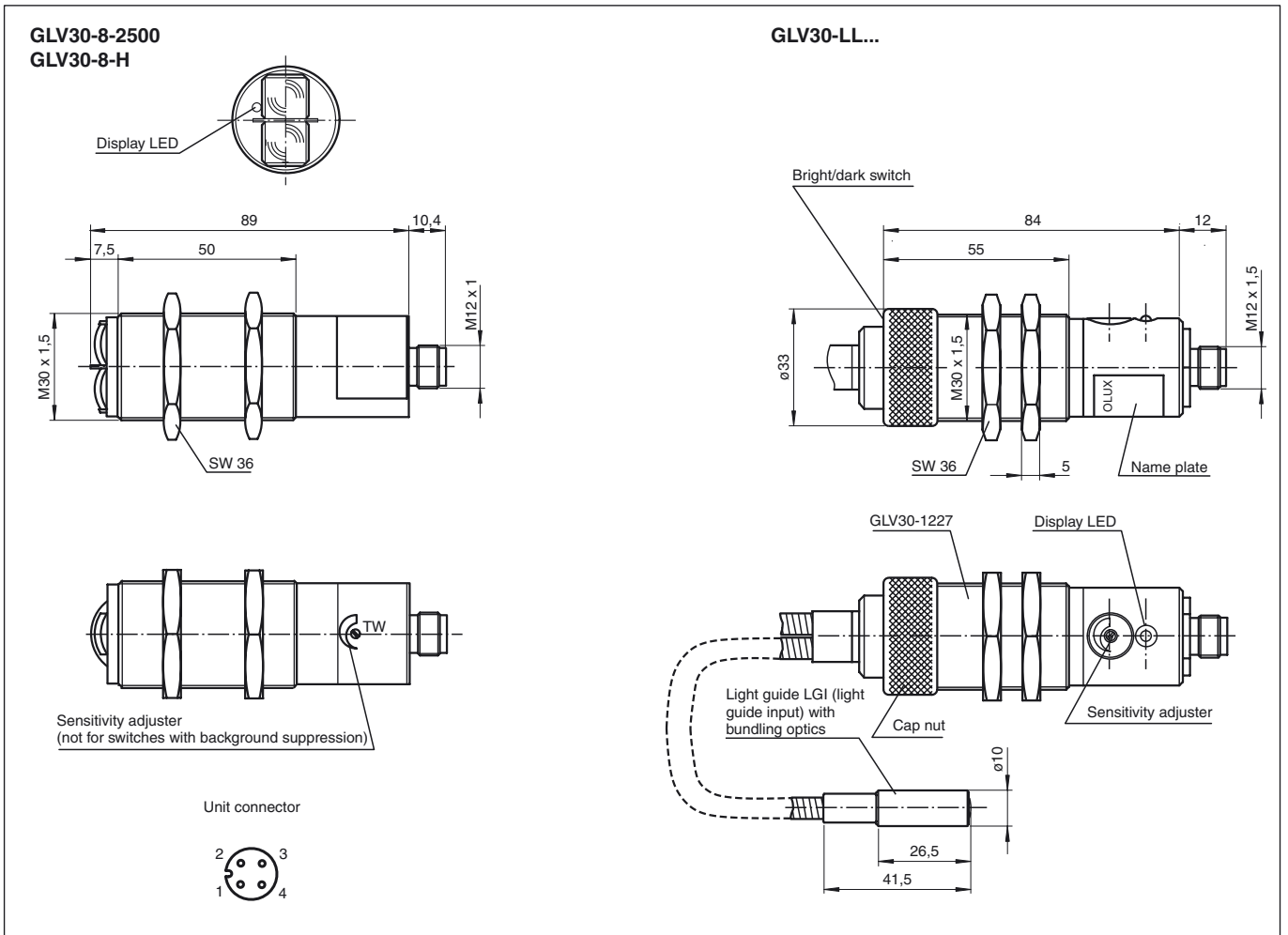
Release date: 2005-04-28 09:48 Date of issue: 2005-07-04 419128_ENG.xml



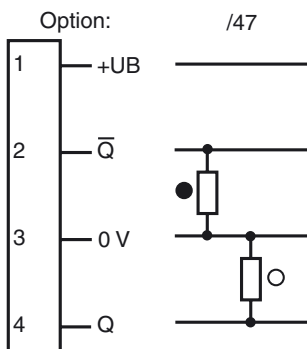
Curves/Diagrams



Dimensions



Electrical connection



Release date: 2005-04-28 09:48 Date of issue: 2005-07-04 419128_ENG.xml