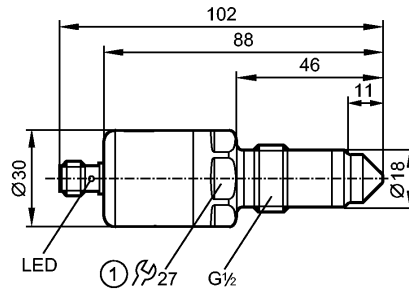


LMT110

LMACE-A12E/QPKG/1/US

Level sensors



1: tightening torque 20...25 Nm

Made in Germany



EHEG Certified



Product characteristics

Electronic level sensor
Connector
Process connection: G 1/2 A
Gold-plated contacts
Probe length: 11 mm
2 switching outputs

Application

Application	oils, grease
Recommended media	oils, grease
Cannot be used for:	water, water-based media
Medium temperature oil	
- Continuous [°C]	0...100
- Short time [°C]	0...150 (1 h)

Electrical data

Electrical design	DC PNP
Operating voltage [V]	18...30 DC
Current consumption [mA]	< 40
Protection class	III
Reverse polarity protection	yes

Outputs

Output	2 switching outputs
Output function	normally open / closed complementary
Current rating [mA]	50
Voltage drop [V]	< 2.5
Short-circuit protection	pulsed
Overload protection	yes

Environment

Ambient temperature [°C]	0...60
Storage temperature [°C]	-25...80
Maximum vessel pressure [bar]	-1...16
Protection	IP 68 / IP 69K

Tests / approvals

EMC	IEC 61000-6-2	: 2005
	IEC 61000-6-4	: 2006 / (open tanks)

LMT110

LMACE-A12E/QPKG/1/US

Level sensors

	IEC 61000-6-3	: 2006 / (closed tanks)
Shock resistance	IEC 60068-2-27:	50 g (11 ms)
Vibration resistance	DIN EN 60068-2-6:	20 g (10...2000 Hz)
MTTF [Years]		469.99

Mechanical data

Process connection	G ½ A	
Materials (wetted parts)	PEEK; surface characteristics: Ra < 0.8	
Housing materials	1.4404; PEEK; PA12-GF30; FKM	
Weight [kg]	0.173	

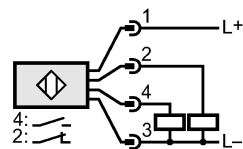
Displays / operating elements

Display	Switching status LED yellow
---------	-----------------------------

Electrical connection

Connection	M12 connector; Gold-plated contacts
------------	-------------------------------------

Wiring



Remarks

Pack quantity [piece]	1
-----------------------	---