

# Electromechanical impulse counters

## → Screw-fixing impulse counters - CIM 24 x 48

- 5 or 6 digits, height of digits 4 mm
- With or without manual reset
- White digits on a black background



### Part numbers

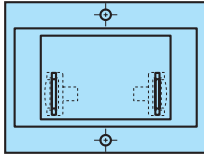
Type	Number of digits	Operating frequency (Hz)	Voltages	Code
Without manual reset	6	50 / 60	230 V $\sim$	99776901
	6	50 / 60	115 V $\sim$	99776902
	6	50 / 60	24 V $\sim$	99776904
	6	V $\text{---}$	110 V $\text{---}$	99776905
	6	V $\text{---}$	24 V $\text{---}$	99776907
With manual reset	5	50 / 60	230 V $\sim$	99776921
	5	50 / 60	115 V $\sim$	99776922
	5	50 / 60	24 V $\sim$	99776924
	5	V $\text{---}$	24 V $\text{---}$	99776927

### General characteristics

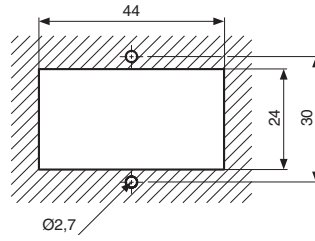
General characteristics	
Counting capacity	999.999 impulses without manual reset 99.999 impulses with manual reset
Height digits (mm)	4
Max. count rate	V $\sim$ → 18 impulses/s V $\text{---}$ → 25 impulses/s
Min. count rate	V $\sim$ → 28 ms V $\text{---}$ → 20 ms
Min pause time between 2 pulses	V $\sim$ → 28 ms V $\text{---}$ → 20 ms
Max. pulse length (count coil)	Unlimited
Voltage variation	+ 10% / -15% Un
Consumption	24 V $\sim$ / 115 V $\sim$ : 1.1 VA 230 V $\sim$ : 2.1 VA 110 V $\text{---}$ : 1 W 24 V $\text{---}$ : 0.8 W
Mechanical life count function (operations)	50 x 10 <sup>6</sup>
Test voltage according to standard IEC 255-5	U < 60 V: 500 V U > 60 V: 2 000 V
Protection Housing	IP40
Degree of terminal protection	IP00
Environmental protection	Plated or stainless steel components
Maintenance	None
Operating position	Any
Temperature limits use (°C)	-10 → +60
Temperature limits stored (°C)	-40 → +80
Certifications	CE
Connection	6.35 Faston connectors or screw terminals
Mounting	2 M3 screws - F90° on front face
Weight (g)	50

## Dimensions (mm)

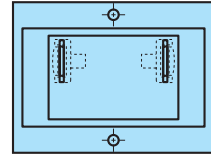
9977690 - Rear faces



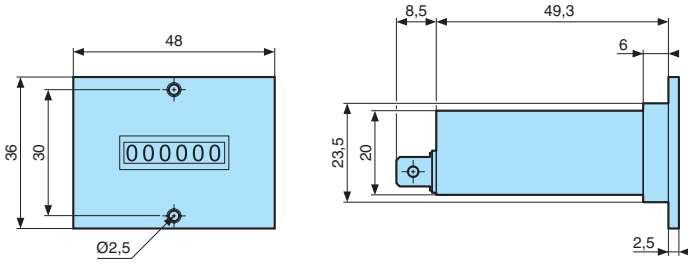
Panel cut-out



9977692 - Rear faces



9977690 - 6 digits



9977692 - 5 digits

