



The innovative connector (accessory) enables traffic light combinations to be created in a matter of seconds



„Status Light“ function to generate additional awareness of the audible signal

- Up to 8 different tones (12 V; 24 V)
- 3 tones can be triggered externally (12 V; 24 V)
- Externally adjustable sound output (-10 dB)
- „Status Light“ to emphasise the audible warning signal
- Ideal addition to LED Beacon 853
- Innovative connector to create traffic light combinations
- Easy assembly due to quick-release screws
- Ideal addition to LED Beacon 853

**i TECHNICAL SPECIFICATIONS:**

Dimensions (L x H x W):	85 mm x 85 mm x 72 mm
Housing:	PP-GF, black
Lens:	PC, tinted black
Connection:	Screw terminal with wire protection, max. 1.5 mm <sup>2</sup>
Cable entry:	Cable diameter max. 8 mm, optional cable gland M20 (accessory)
Fixing:	Wall, base and ceiling mounting
Equipment:	Eight self-sealing membranes for cable entry without tools. Eight integrated M20 threads, no nuts required. Optional use of a cable gland, thread length of cable gland ≤ 9 mm (accessory)
Asseby:	Incl. snap-on fixing bracket (optional use)

**ORDER SPECIFICATIONS:**

Voltage	12 V DC	24 V DC	48 V AC	115-230 VAC
Current consumption	150 mA	100 mA	150 mA	75 mA (115 V) 150 mA (230 V)
	<b>153 000 54</b>	<b>153 000 55</b>	<b>153 000 66</b>	<b>153 000 60</b>



The technical specifications and order specifications of the 853 LED Beacons can be found at [www.werma.com](http://www.werma.com) or on page 135 (LED Permanent Beacon), page 152 (LED Double Flash Beacon) and on page 153 (LED EVS Beacon).  
Traffic light configurator at [www.werma.com](http://www.werma.com)

**ACCESSORIES:**

Connector for traffic light combinations	<b>975 853 01</b>
Cable gland M20 x 1.5 mm, 8 mm thread length	<b>975 853 02</b>

**TONE TYPES AND FREQUENCIES:**

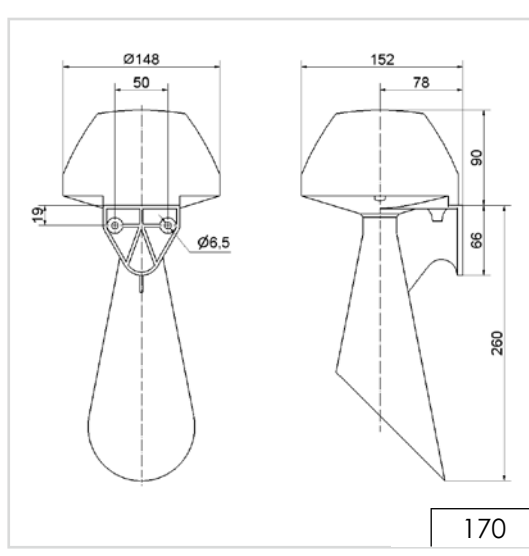
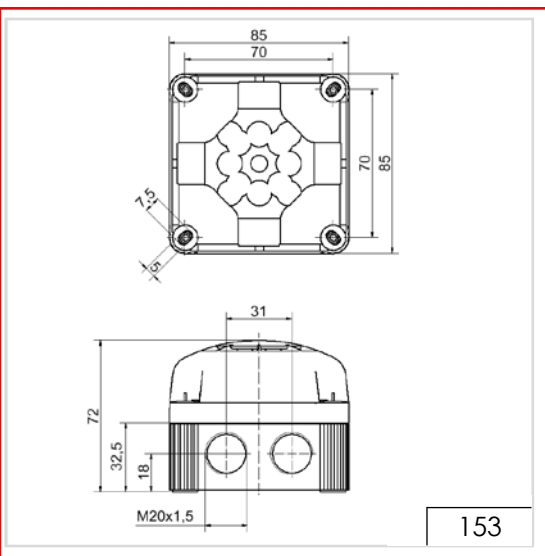
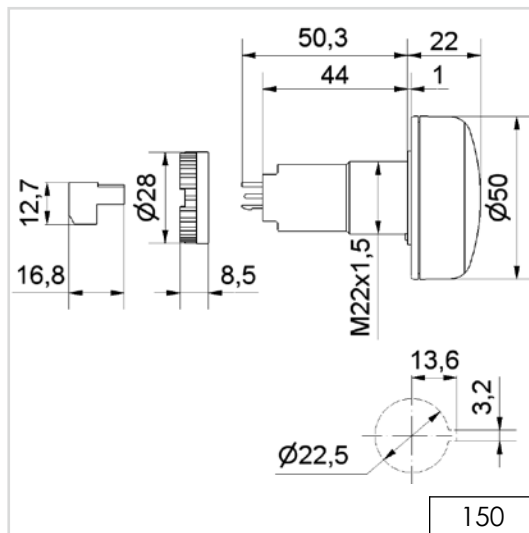
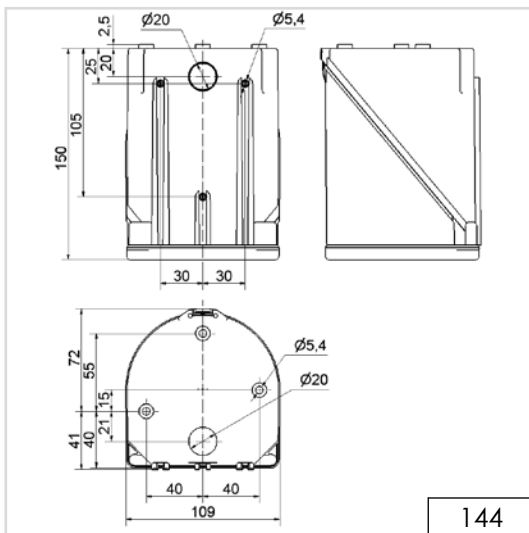
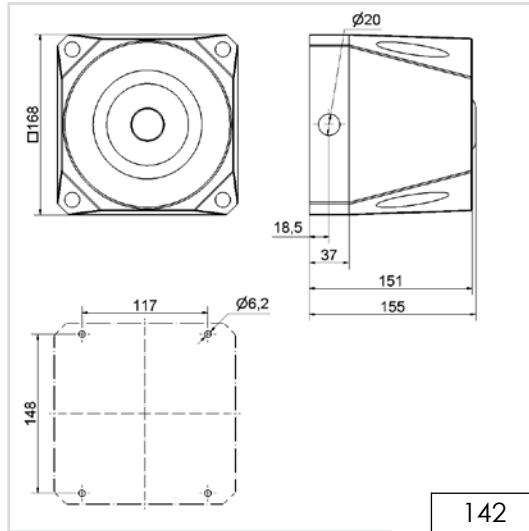
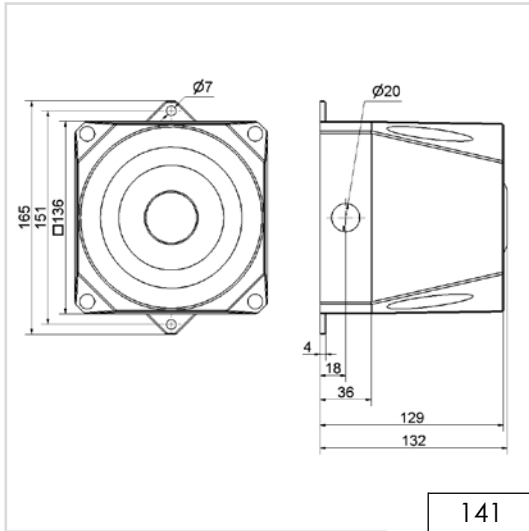
Tone	Tone type	Tone	Ton type
1	Continuous tone (ca. 3000 Hz)	5	800 - 970 Hz rising @ 1 Hz
2	Horn tone (ca. 110 Hz)	6	2400 - 2850 Hz rising @ 7 Hz
3	1 Hz tone (ca. 3,0 kHz)	7	1200 - 500 Hz falling @ 1 Hz
4	20 Hz whistle tone (ca. 3,0 kHz)	8	Alternating tone 800 Hz/1200 Hz@1 Hz

**TECHNICAL DIAGRAMS:**

see page 297

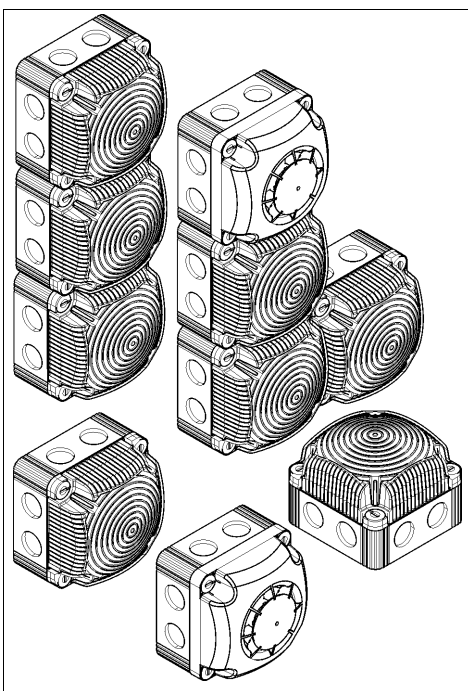
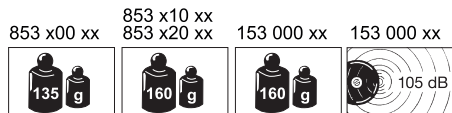
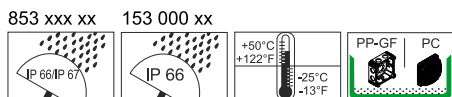
12 V, 24 V      48 V, 115-230 V





**! ADDITIONAL INFORMATION:**

You are welcome to request the technical diagrams in digital form. The relevant 3D models, instruction leaflets and connection diagrams can be obtained from us or downloaded from our homepage at any time.



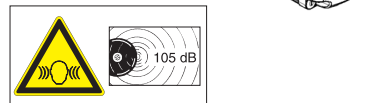
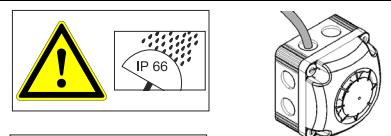
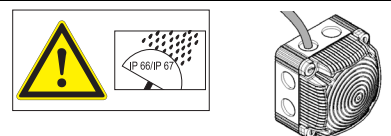
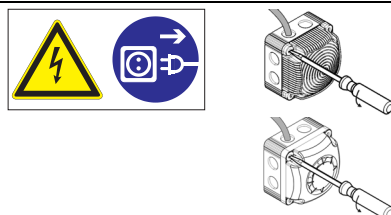
310.853.001.0714

© D

WERMA Signaltechnik GmbH + Co. KG  
 D-78604 Rietheim-Weilheim  
 Telefon +49 (0)7424 / 9557-0  
 Telefax +49 (0)7424 / 9557-44  
 info@werma.com  
 www.werma.com



- ⓓ Anschluss **ausschließlich** durch ausgebildete Elektro-Fachkräfte.
- ⓖⓑ Electrical connection is to be made by trained electrical specialists **only**.
- ⓕ Le branchement doit **uniquement** être effectué par des professionnels.
- ⓓ Il collegamento deve essere eseguito **solo** da elettricisti specializzati.
- ⓔ La conexión **sólo** debe ser realizada por electricistas debidamente formados.
- ⓐ A ligação deve ser feita **exclusivamente** por profissional elétrico especializado.
- ⓃL De aansluiting mag **enkel** gebeuren door erkende vakmensen.
- ⒸZ Připojení smí **provádět** pouze kvalifikovaný personál.
- ⓐL Podłączenie **wyłącznie** przez specjalistów-elektryków.
- ⓕI Liittäminen kuuluu **ainoastaan** koulutettujen sähköalan ammattilaisten tehtäviin.
- ⓐRUS Подключение проводится только специалистом-электриком.
- ⓐTR Bağlantı **sadece** eğitimli elektrik teknisyenleri tarafından yapılmalıdır.
- ⓃN 布线需由专业电工执行



853 x20 xx

- ⓓ Bei Epilepsie ungeeignet!
- ⓖⓑ Unsuitable for epilepsy sufferers
- ⓕ Ne convient pas aux personnes souffrant d'épilepsie
- ⓓ Inadatto per epilettici
- ⓔ Inadecuado para epilépticos
- ⓐ PT Não aconselhavel a pessoas que sofrem de Epilepsia
- ⓃL Niet geschikt voor epileptici.
- ⒸZ Nevhodné pro epileptiky
- ⓐL Nie stosować przy zchorzeniu padaczki
- ⓕI Ei sovellu epilettikoille
- ⓐRUS Не подходит для страдающих эпилепсией
- ⓐTR Epilepsi hastalığı olanların kullanmaması önerilir
- ⓃN 不适用于癫痫病患者



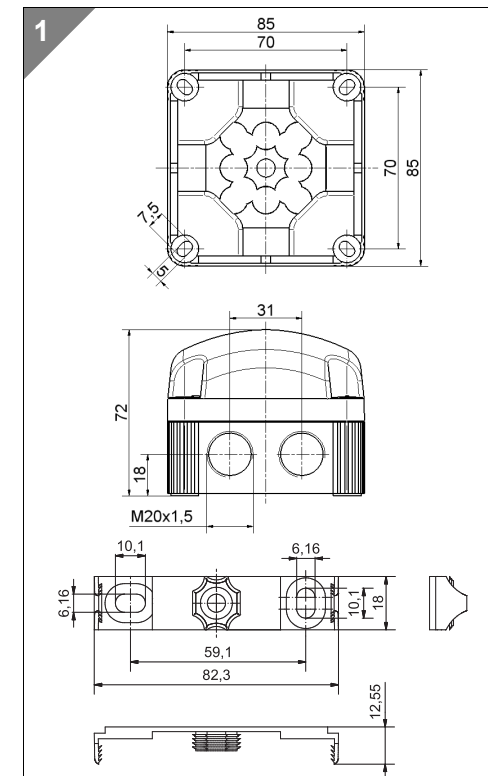
853 x00 54	12 VDC, ≤ 180 mA, I <sub>0</sub> < 1250 mA
853 x00 55	24 VDC, ≤ 80 mA, I <sub>0</sub> < 500 mA
853 x00 66	48 V~, ≤ 35 mA, I <sub>0</sub> < 200 mA
853 x00 60	115–230 V~, ≤ 40 mA, I <sub>0</sub> < 7 A
853 x10 54	12 VDC, ≤ 100 mA, I <sub>0</sub> < 1250 mA
853 x10 55	24 VDC, ≤ 80 mA, I <sub>0</sub> < 500 mA
853 x10 66	48 V~, ≤ 90 mA, I <sub>0</sub> < 2 A
853 x10 60	115–230 V~, ≤ 180 mA, I <sub>0</sub> < 7 A
853 x20 54	12 VDC, ≤ 400 mA, I <sub>0</sub> < 1250 mA
853 x20 55	24 VDC, ≤ 200 mA, I <sub>0</sub> < 500 mA
853 x20 66	48 V~, ≤ 95 mA, I <sub>0</sub> < 2 A
853 x20 60	115–230 V~, ≤ 180 mA, I <sub>0</sub> < 7 A
153 000 54	12 VDC, ≤ 70 mA, I <sub>0</sub> < 500 mA
153 000 55	24 VDC, ≤ 120 mA, I <sub>0</sub> < 500 mA
153 000 66	48 V~, ≤ 150 mA, I <sub>0</sub> < 2 A
153 000 60	115–230 V~, ≤ 75 – ≤ 150 mA, I <sub>0</sub> < 7 A



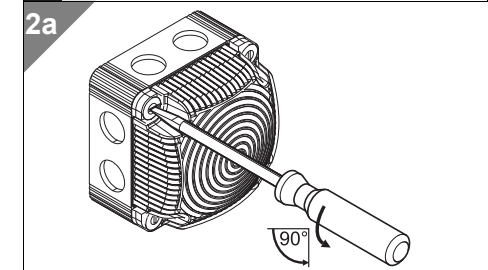
(vgl. Abb. 7b,c / see Fig. 7b,c / ref. III. 7b,c)

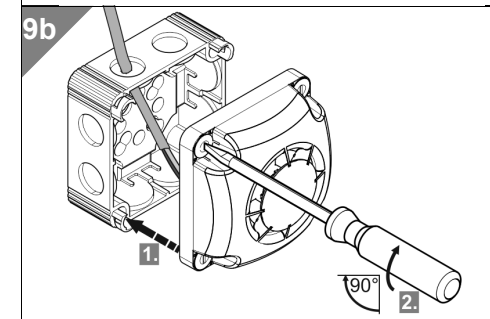
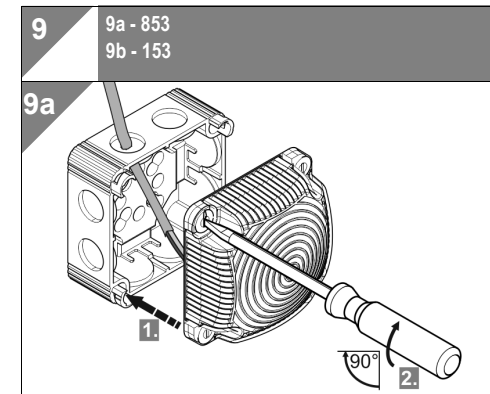
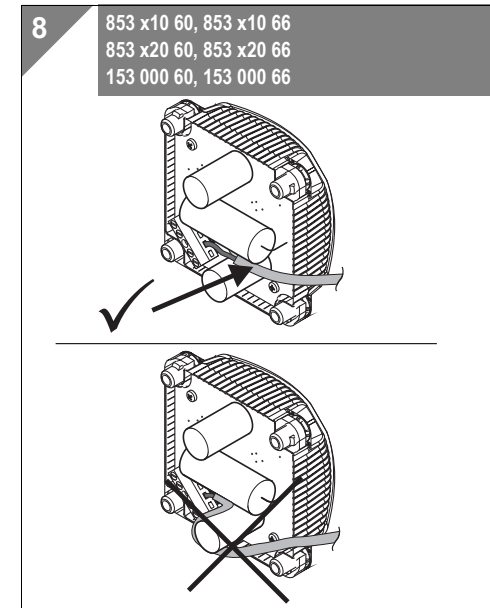
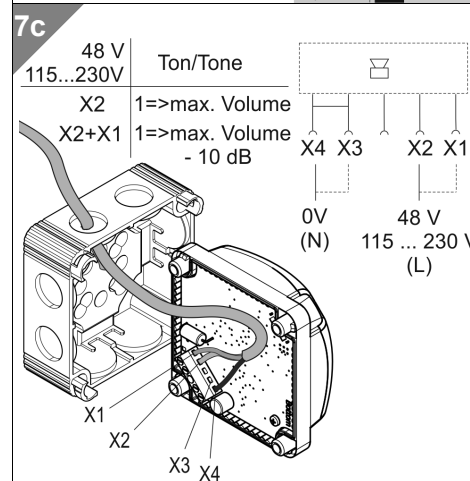
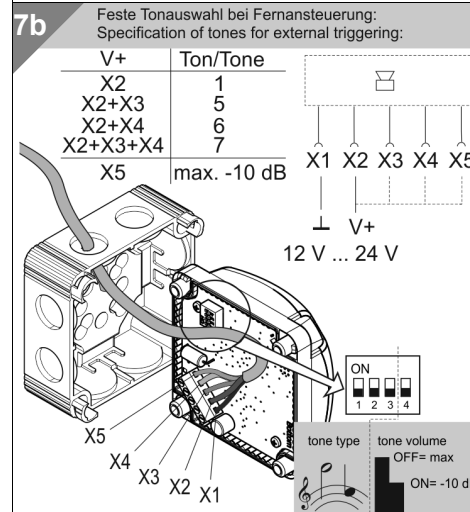
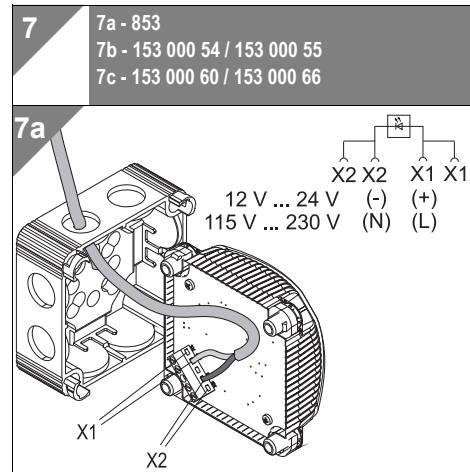
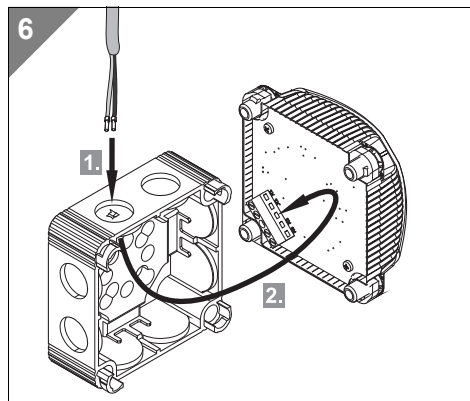
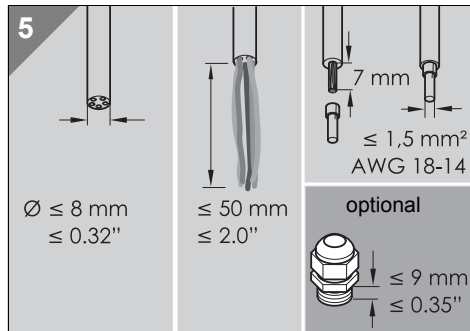
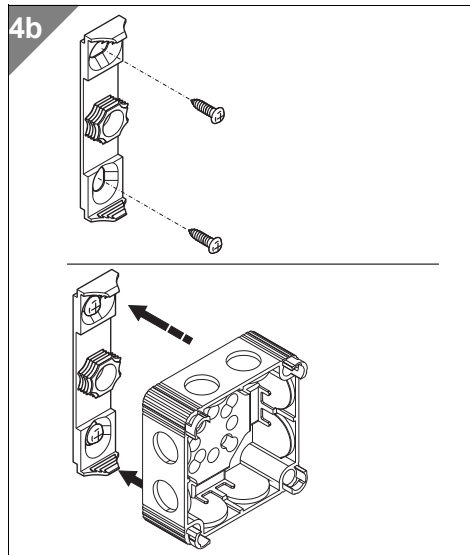
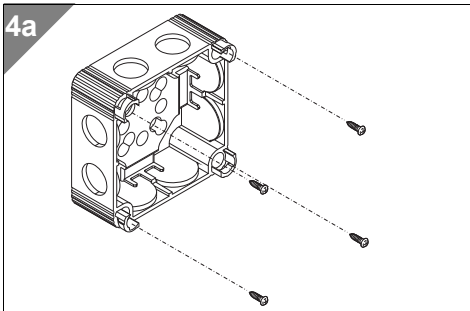
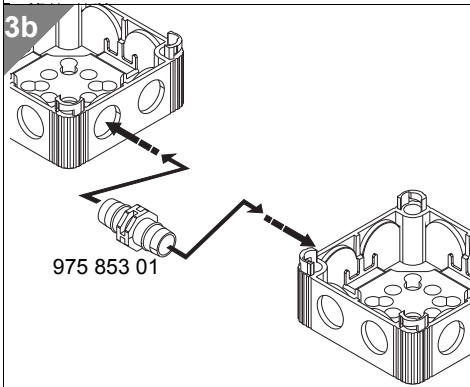
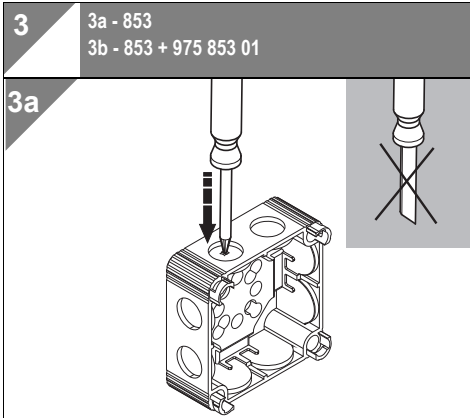
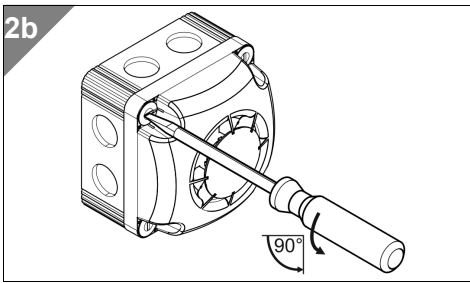
Stufe Stage Niveau	Code	Tonart Tone type Tonalité	Frequenz Frequencies Fréquence
1	000	Dauerton, continuous, continu	ca. 3000 Hz
2	001	Huperton, horn tone, trompe	ca. 110 Hz
3	010	1 Hz Ton, 1 Hz tone, 1 Hz ton	ca. 3000 Hz
4	011	20 Hz Trillerton, 20 Hz whistle tone, 20 Hz trille	ca. 3000 Hz
5	100	ansteigend, rising, montant	800 - 970 Hz @ 1 Hz

6	101	ansteigend, rising, montant	2400 - 2850 Hz @ 7 Hz
7	110	abfallend, falling, incliné	1200 - 500 Hz @ 1 Hz
8	111	alternierend, alternating, alternant	800/1200 Hz @ 1 Hz



2  
 2a - 853  
 2b - 153





310.853.001.0714

© D

**WERMA**  
SIGNALTECHNIK