

## Hour meters / timers, electronic

<b>LCD time modules</b>	<b>Max. time range 9999.99 h (DC)</b>	<b>194</b>
-------------------------	---------------------------------------	------------



The timer module of the type 194 for PCB mount features a 6-digit LCD display and 2 voltage ranges (4.75...15 V DC and 9...60 V DC).

It is extremely robust and suitable for many different applications thanks to its wide temperature range.



Timer



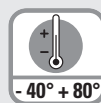
Power supply



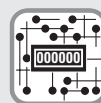
Input type



High shock resistance



Temperature range



PCB mount



LCD display



Electrical reset

### Powerful

- Display range up to 9999-99 hours.
- 6-digit LCD display, 6 mm high.
- Low power consumption.
- Wide voltage and temperature range.
- Very high shock and vibration resistance.

### Simple

- Non-volatile memory (no battery).
- Counting starts as soon as power supply is applied.
- Electrical reset.
- Very high reliability.
- Small size and low cost.

### Order specifications

#### Power supply

4.75 ... 15 V DC

9 ... 60 V DC

#### Order no.

**6.194.012.F00**

**6.194.012.G00**

#### Art.-No.

162 137

162 138

#### Delivery specification

- LCD hour meter module type 194
- Operating instructions

# Hour meters / timers, electronic

<b>LCD time modules</b>	<b>Max. time range 9999.99 h (DC)</b>	<b>194</b>
-------------------------	---------------------------------------	------------

## Technical data

### General technical data

<b>Display</b>	6 digits, LCD display, figure height 6 mm [0.24"]
<b>Display range</b>	9999.99 h
<b>Data backup</b>	CMOS EEPROM non-volatile memory up to 10 years
<b>Operating temperature</b>	-40°C ... +85°C [-40°F ... +185°F] (non-condensing)
<b>Working temperature</b>	-20°C ... +80°C [-4°F ... +176°F] (non-condensing)
<b>Storage temperature</b>	-50°C ... +90°C [-58°F ... +194°F]

### Electrical characteristics

<b>Power supply</b>	...F00	4.75 ... 15 V DC, with reverse polarity protection
	...G00	9 ... 60 V DC
<b>Current consumption</b>	...F00	8 mA at 4.75 ... 15 V DC
	...G00	6 mA at 9 ... 60 V DC
<b>EMC standards</b>	EN 55011 class B EN 61000-6-2, EN 61000-6-3 EN 61326-1	

The module must be protected against inductive voltage spikes and high energy noise interference.

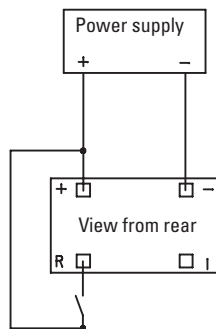
### Mechanical characteristics

<b>Housing</b>	color	black
<b>Weight</b>	approx. 8 g [0.28 oz]	
<b>Shock resistance</b>	acc. to DIN-IEC 68-2-27	550 m/s <sup>2</sup> , 11 ms
<b>Vibration resistance</b>	acc. to DIN-IEC 68-2-6	50 ... 200 m/s <sup>2</sup> , 10 ... 80 Hz

### Inputs

<b>Reset input</b>	HIGH	4 ... 60 V DC
	LOW	0 ... 0.7 V DC
	pulse length	min. 1 ms, edge triggered (rising)
<b>Measuring error</b>	a max. error of 36 sec. occur per Start/Stop cycle	
<b>Accuracy (Quarz)</b>	max. 200 ppm 25°C [+77°F]	

## Terminal assignment



## Dimensions

Dimensions in mm [inch]

